



Windows 10 IoT Enterprise for Latitude 3480 and 5280 Mobile Thin Client Maintenance Release 1 Release Notes

Software releases are created to correct defects, make enhancements, or add new features. These releases are tested on all current, actively shipping platforms and operating systems as applicable. This release notes contain details on the supported platforms, any changes in the configuration settings and licensing details as well. The bug fixes along with the workarounds are documented in the release notes. Any changes in the feature functionality from an end-user perspective are listed with the description of each feature at a high level.

Current Version: 0A72 for Latitude 3480 mobile thin client and 0A73 for Latitude 5280 mobile thin client

Release Date: August 2018

Previous Version: 0A63 for Latitude 3480 mobile thin client and 0A64 Latitude 5280 mobile thin client

Contents

Release type and definition.....	1
New features.....	2
Boot sequence in BIOS.....	2
Supported peripherals.....	2
System preparation tool—Sysprep UI.....	3
Unified Write Filter.....	6
ENERGY STAR specifications.....	8
Support matrix.....	8
Fixed issues.....	10
Known issues.....	10
Device manager components and driver versions.....	10
Application, feature, and file details.....	12
Installed product details.....	13
Quick Fix Engineering—QFE details.....	14
Used and free space information.....	14
Important notes.....	14

Release type and definition

This maintenance release (MR1) is for the following platforms that runs Windows 10 IoT Enterprise operating system:

- Latitude 3480 mobile thin client—Unified build 0A72
- Latitude 5280 mobile thin client—Unified build 0A73

NOTE: There are no further maintenance releases for Latitude 3480/5280 mobile thin client with Windows 10 IoT Enterprise.

CAUTION: Please follow proper write filter and Windows Page File usage instructions at all times. Such instructions include making sure that the write filter is enabled during regular use and is disabled only temporarily by an administrator when required for image upgrades, applying security patches, registry changes and application installation. The write filter should be re-enabled as soon as such tasks are completed. Such instructions further include never enabling the Windows Page File feature during regular use of the thin client. Any operation of a Dell Wyse Windows Embedded Thin Client with the write filter that is turned off during regular use and/or with the Windows Page file enabled will prematurely wear out your Flash/SSD storage, decrease performance and decrease the lifespan of the product. Dell is not responsible for, and will not, warrant, support, repair or replace any thin client device or component that fails to operate properly due to a failure to follow these instructions.

New features

- Wyse Device Agent (WDA) is updated to v14.2.0.51.
- Boot Agent (BA) is updated to v3.7.7.
- VMware Horizon Client is updated to v4.8.
- Citrix Receiver is updated to v4.11.
- Citrix HDX RealTime Media Engine is updated to v2.4.
- Dell Thin Client Application is updated to v10.0.0.20.
- Windows Defender is updated to v1.271.449.0.
- Dell KM632 wireless keyboard caps lock indicator is updated to v2.1.11.1 as part of unquoted service path vulnerability.
- Unified Write Filter tray utility—**UWFTray.exe** is updated to v1.0.4.12.
- UWFSvc—**UWFsvc.exe** is updated to v1.0.4.12.
- Microsoft .Net Framework is updated to v4.7.1.
- Sysprep UI is integrated to v1.0.0.10.
- Wyse Easy Setup is integrated to v1.0.1.3289.
- The Win+L key is enabled as an operating system feature.
- C-A-D map is enabled by default.
- QFEs are installed until June 2018.
- Intel Bluetooth driver is updated to v19.60.0.3 for Latitude 5280 mobile thin client.
- Qualcomm driver is updated to v12.0.0.448 for Latitude 3480 mobile thin client.
- Intel ME driver is updated to v11.7.0.1054.
- Intel Graphics driver is updated to v22.20.16.4836.

Boot sequence in BIOS

Table 1. Boot sequence in BIOS

Boot priority order	Component
First boot	Windows Boot Manager
Second boot	Merlin Non-Pxe
Third boot	Onboard NIC (IPv4)

Supported peripherals

- Dell Entry USB 3.0 dock—D1000
- Dell 20 Monitor—E2016H
- Dell 20 Monitor—E2016HV
- Dell 22 Monitor—E2216H

- Dell 22 Monitor—E2216HV
- Dell UltraSharp 24 Monitors—U2415
- Dell 21.5 medical review monitor
- Dell 20 Monitor
- Dell 22 Monitor
- Dell 24 Monitor—P2417H
- Dell 23 Monitor—P2317H
- Dell 27 Monitor—P2317H
- Dell Pro Stereo headset UC300—Lync Certified
- Dell Pro Stereo headset—Skype for Business
- Jabra Evolve 65 MS wireless headset (Stereo)—Office Centric
- Dell USB sound bar
- Dell 2.0 Speaker system
- Dell adapter—HDMI to VGA adapter
- Dell MS116 USB wired optical mouse
- Dell wireless mouse—WM326
- Dell wireless keyboard and mouse combo—KM636
- Dell USB wired keyboard with smartcard reader—KB813
- Dell Dock—WD15
- Dell E2318HN
- Power companion—PW7015M

System preparation tool—Sysprep UI

The System Preparation tool **Sysprep.exe** can be used with other deployment tools to install Microsoft Windows operating systems. The installation can be completed with minimal intervention by an administrator.

Sysprep.exe calls other executable files during Windows installation. **Sysprep.exe** is located in the `%WINDIR%\system32\sysprep` directory. The file must run from the `%WINDIR%\system32\sysprep` directory, and the Windows version on which it is installed.

The following features are not supported in this release:

- There is no integrated administrator account.
- Microsoft has removed the following Windows 10 features in this release:
 - Measured boot
 - Fast Boot
 - Refresh PC and Reset PC
 - Anti malware
 - Custom branding
 - WIM boot
 - Bing sports
 - Xbox Live
 - Skype
 - Zune videos
 - Zune music
 - People
 - Windows communication software
 - Office note
 - Maps

- Bing news
- Store app
- Edge
- Cortana
- Boot from USB is not supported, enable this option in BIOS.
- Native PXE imaging support is not available in this version as the boot mode is set to UEFI.
- The following lockdown features are not supported:
 - USB filter
 - Keyboard filter
 - Gesture filter
- Embedded Lockdown Manager is not supported.

Running Custom Sysprep tool

Prerequisite

- Disable Unified Write Filter.
- Logging framework must be available on your thin client.
- PowerShell script execution environment, Custom Sysprep, Configuration Sysprep (SCCM) scripts, and Hostname calculation feature must be available.
- Reduce the flash drive or hard drive size to less than 32 GB.

About this task

When you access the operating system using Custom Sysprep, it is configured according to OEM specification or customer requirement. The information in the user interface is saved as configuration files (.xml) and is used for the Custom Sysprep process. To run the Custom Sysprep tool, do the following:

Steps

- 1 Go to <drive C>\Windows\Setup.
- 2 Right-click **Build_Master.cmd**, and select **Run as administrator**.

The **Config Master** window is displayed.

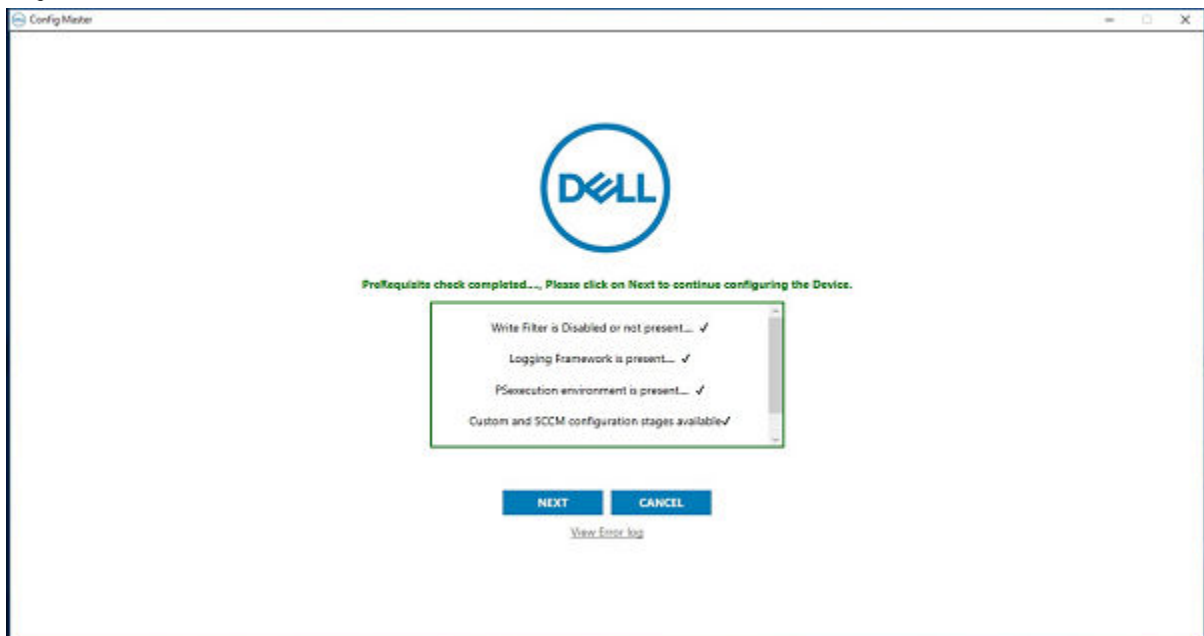


Figure 1. Config Master

- 3 Click **Next**.

The **Configuration** screen is displayed.

The screenshot shows a configuration window with the following sections:

- Configurations:** Two radio buttons: Custom configuration and SCCM configuration.
- Host Name calculation:** Three radio buttons: Enable, Disable, and Retain current settings.
- Configure Domain options:** Four text input fields: User Name (containing 'Test'), Password (masked with dots), Domain (containing '...com'), and OU (empty). To the right of the OU field is a checkbox labeled 'Configure OU option' which is unchecked, and a blue button labeled 'Save Credentials'.
- Configure local account credentials:** A checkbox labeled 'Enable local account credential changes' which is checked.

At the bottom right of the window are two blue buttons: 'Next' and 'Cancel'.

Figure 2. Configurations

- 4 Select **Custom configuration** in the **Configurations** section.
- 5 Enable or disable hostname calculation in the **Host Name calculation** section.
- 6 Enter the appropriate values in the **Configure Domain options** section, and click **Save Credentials**.
- 7 Click **OK** when prompted.
- 8 Select **Enable local account credential changes**.
The changes that are made to the credentials are applied.
- 9 Click **Next**.
The **Credentials Manager** page is displayed.

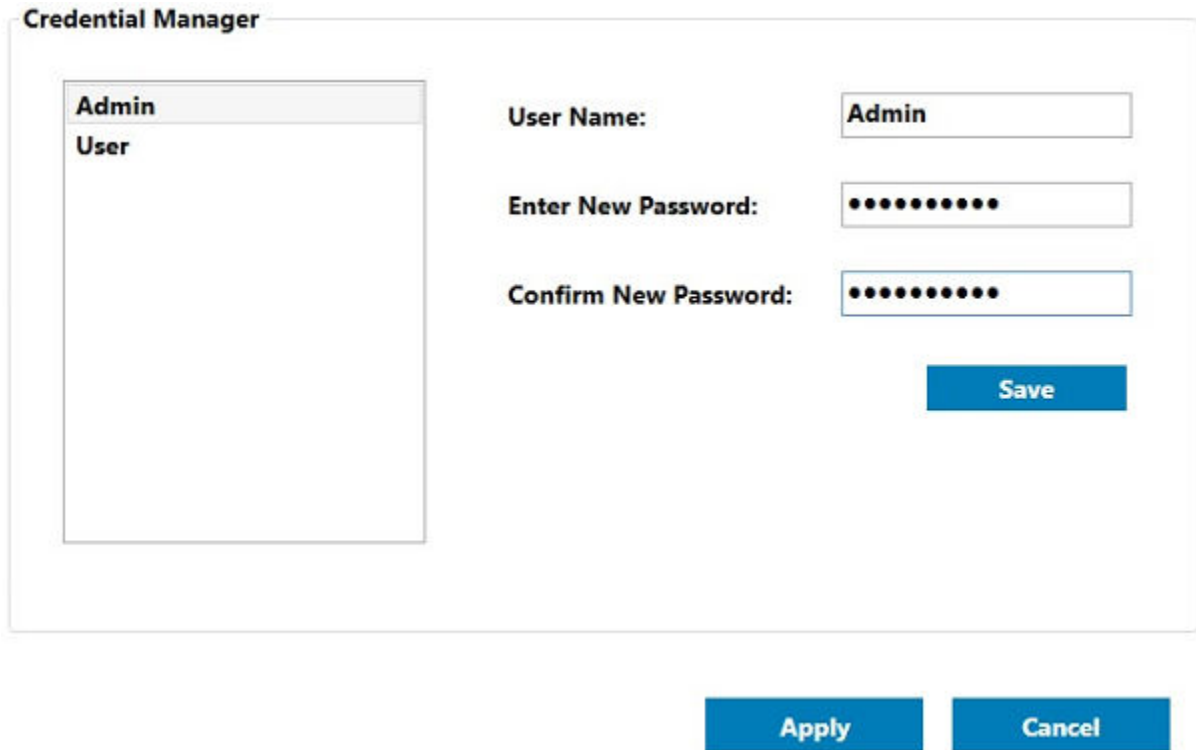


Figure 3. Credential manager

- 10 Select the user account, and type the login credentials.
- 11 Click **Save**.
- 12 Click **Apply** to save the changes.

This process takes 5–10 minutes to complete. The device turns off after the Sysprep process is complete.

NOTE: If SFC scan is enabled, the process may take 45–60 minutes to complete.

Unified Write Filter

To enable or disable the Write Filter, see *Microsoft Windows 10 IoT Enterprise Administrators Guide* at [Dell support site](#).

CAUTION: Please follow proper write filter and Windows Page File usage instructions at all times. Such instructions include making sure that the write filter is enabled during regular use and is disabled only temporarily by an administrator when required for image upgrades, applying security patches, registry changes and application installation. The write filter should be re-enabled as soon as such tasks are completed. Such instructions further include never enabling the Windows Page File feature during regular use of the thin client. Any operation of a Dell Wyse Windows Embedded Thin Client with the write filter turned off during regular use and/or with the Windows Page file enabled will prematurely wear out your Flash/SSD storage, decrease performance and decrease the lifespan of the product. Dell is not responsible for, and will not, warrant, support, repair or replace any thin client device or component that fails to operate properly due to a failure to follow these instructions.

- When you disable the Write Filter from the system tray, a caution message is displayed.

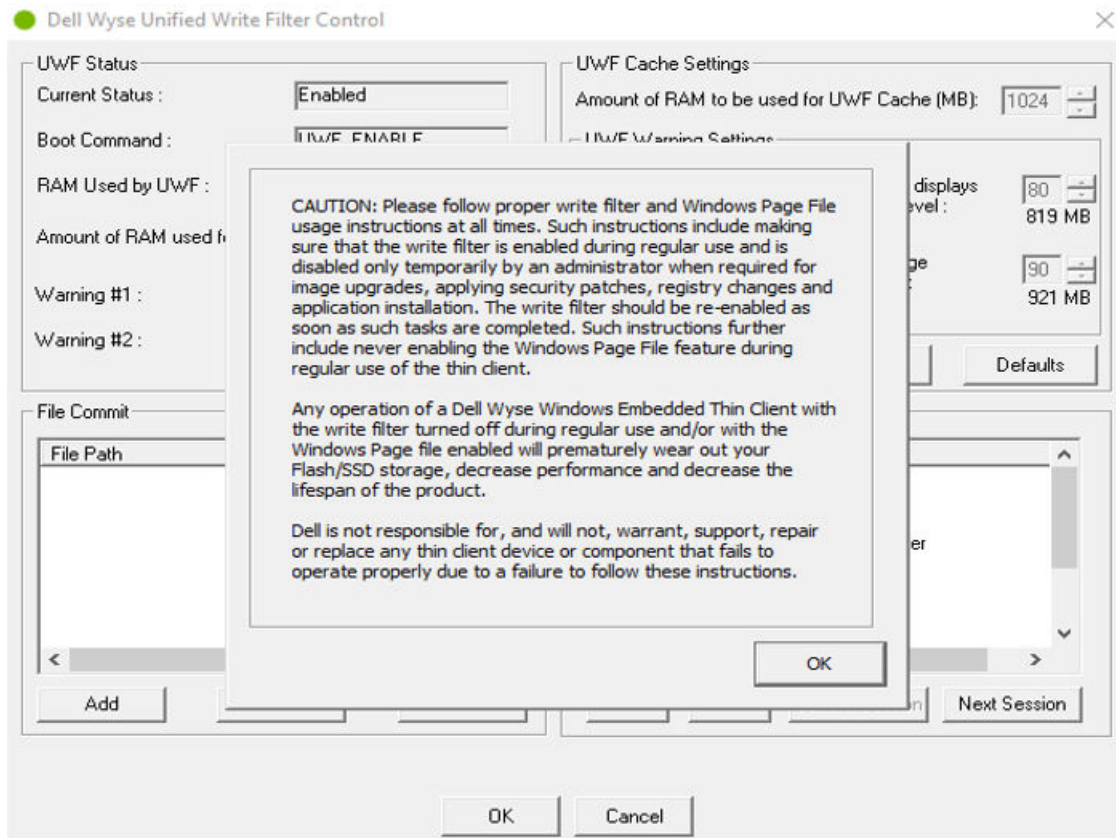


Figure 4. UWF caution message

- After the Write Filter is disabled, a caution message is displayed during every reboot to notify that the client is used in Write Filter disable state.

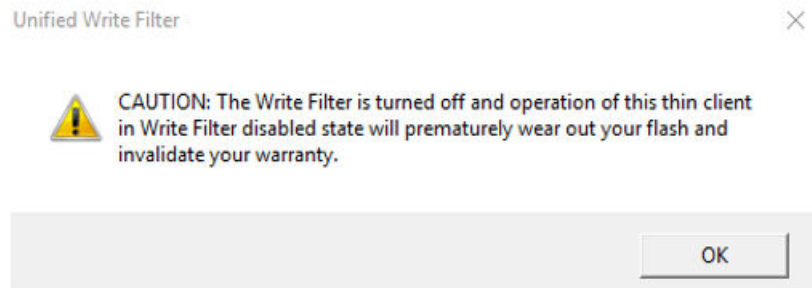


Figure 5. UWF caution pop-up

UWF file folder exclusions

- C:\Users\Admin\AppData\LocalLow
- C:\Users\User\AppData\LocalLow
- C:\Program Files\Windows Defender
- C:\Program Files (x86)\Windows Defender
- C:\Windows\WindowsUpdate.log
- C:\Windows\Temp\MpCmdRun.log
- C:\ProgramData\Microsoft\Windows Defender
- C:\program files\Wyse\WDA\Config

- C:\Users\Public\Documents\Wyse
- C:\Wyse\WCM\ConfigMgmt
- C:\Wyse\WCM
- C:\Wyse\WDA
- C:\Windows\System32\spp

UWF Registry exclusions

- HKLM\Software\Wyse\ConfigMgmt
- HKLM\SYSTEM\CurrentControlSet\Control\WNT\UWFSvc
- HKLM\SOFTWARE\Microsoft\Windows Defender
- HKLM\SOFTWARE\Microsoft\Windows\CurrentVersion\HomeGroup
- HKLM\SOFTWARE\Microsoft\Windows NT\CurrentVersion\NetworkList
- HKLM\SYSTEM\WPA

ENERGY STAR specifications

Latitude 3480/5280 mobile thin client with Windows 10 IoT Enterprise meets the ENERGY STAR version 6.0.

When the thin client is connected to an external power source, the following values are set by default in control panel applet of Power options:

- Supports WOL power off states.
- Supports idle state wake.
- Screen off timer set to 10 minutes.
- Sleep timer set to 15 minutes.

When the thin client runs on battery, the following values are set by default in control panel applet of Power options:

- Supports idle state wake.
- Screen off timer set to 5 minutes.
- Sleep timer set to 5 minutes.

Support matrix

Table 2. Test environment

Platform	Latitude 3480 mobile thin client	Latitude 5280 mobile thin client
Operating system	Windows 10 IoT Enterprise	Windows 10 IoT Enterprise
Build number and size	3480_0A72_32GB.exe —10.9 GB (11,720,321,931 bytes)	5280_0A73_32GB.exe —12.2 GB (13,144,826,697 bytes)
BIOS version	1.8.0	1.10.4
RAM	8 GB	8 GB
Flash drive	128 GB M2 SSD	128 GB M2 SSD
Languages	en-US, Fr-FR, De-DE, Es-ES, It-IT, zh-CN, Zh-TW, Ja-JP	en-US, Fr-FR, De-DE, Es-ES, It-IT, zh-CN, Zh-TW, Ja-JP

Table 3. Product information

Product name	Windows 10 Enterprise 2016 LTSB	Windows 10 Enterprise 2016 LTSB
Model Name	Latitude 3480 Wyse thin client	Latitude 5280 Wyse thin client
Product Version	12.01—Build 0A72.119GB	12.01—Build 0A73.119GB
Windows Embedded version	10.0 Build—14393	10.0 Build—14393
Manufacturer	Dell Inc.	Dell Inc.

Table 4. General details

Platform	<ul style="list-style-type: none"> Latitude 3480 mobile thin client with Windows 10 IoT Enterprise Latitude 5280 mobile thin client with Windows 10 IoT Enterprise
WDM version	5.7.3
Wyse Management Suite version	1.2
USB Imaging Tool version	3.1.0
Boot Agent version	3.7.7
Language control application version	1.0.0
SCCM version	<p>Microsoft System Center Configuration Manager 2016</p> <p>Version 1606</p> <p>Console Version: 5.0.8412.1313</p> <p>Site version: 5.0.8412.1000</p>

Table 5. BIOS details

Platform	Latitude 3480 mobile thin client	Latitude 5280 mobile thin client
BIOS version	Latitude_3480_1.8.0.exe	Latitude_5280_1.10.4.exe
Type of file	.exe file	.exe file
Size	6.35 MB (6,663,400 bytes)	19.1 MB (20,066,704 bytes)

Table 6. Processor details

Platform	Latitude 3480 mobile thin client	Latitude 5280 mobile thin client
Name	Intel Celeron CPU 3865U at 1.80 GHz	Intel Core i5-7300U CPU at 2.60 GHz
Speed	1800 MHz	2701 MHz
Address width	64 bits	64 bits
Data width	64 bits	64 bits

Fixed issues

Table 7. Fixed issues

Issue number	Description
WS-2059	Wyse Device Agent does not report IP address to the Wyse Management Suite.
WS-2060	Wyse Management Suite does not report Custom fields from Windows 10 IoT Enterprise devices.
WS-2055	C-A-D tool—Win+L Hotkey
WS-2056	Incorrect passwords in the Registry-Auto login field.

Known issues

Table 8. Known issues

Issue number	Description	Workaround
WS-2154	The error message Windows could not complete the installation. To install Windows on this computer, restart the installation is displayed, while imaging from Wyse Management Suite server with Logitech HD Webcam C930e and multiple USB drives are connected to the device.	During imaging, do not connect any external devices except keyboard and mouse.

Device manager components and driver versions

Table 9. For Latitude 3480 mobile thin client

Driver name	Driver version
Microphone—Realtek audio	10.0.14393.0
Speakers/headphones—Realtek audio	10.0.14393.0
Microsoft Bluetooth enumerator	10.0.14393.1198
Microsoft Bluetooth LE enumerator	10.0.14393.2214
Qualcomm QCA61x4A Bluetooth 4.1	10.0.0.448
Intel HD Graphics 610	22.20.16.4836
SanDisk X400 M.2 2280 128 GB	10.0.14393.1613
Microsoft Input Configuration device	10.0.14393.0
HID-compliant system controller	10.0.14393.2312
HID-compliant touch pad	10.0.14393.2312
Intel dynamic platform and thermal framework generic participant	8.2.11000.2996
Intel dynamic platform and thermal framework manager	8.2.11000.2996
Intel dynamic platform and thermal framework memory participant	8.2.11000.2996

Driver name	Driver version
Intel dynamic platform and thermal framework processor participant	8.2.11000.2996
HID-compliant mouse	10.0.14393.0
PS/2 compatible mouse	10.0.14393.0
Bluetooth device—Personal Area Network #2	10.0.14393.1480
Bluetooth device—RFCOMM Protocol TDI #2	10.0.14393.0
Qualcomm QCA61x4A 802.11sc wireless adapter	12.0.0.448
Realtek PCIe GBE family controller	10.12.1007.2016
Intel Celeron CPU 3865U at 1.80 GHz	10.0.14393.2273
Intel display audio	10.23.0.567
Realtek audio	6.0.1.8142

Table 10. For Latitude 5280 mobile thin client

Driver name	Driver version
Dell ControlVault—fingerprint sensor	4.9.16.22
Microsoft Usbccid Smartcard Reader (WUDF)	10.0.14393.0
Intel display audio	10.22.0.37
Realtek audio	6.0.1.8258
DW5811e Snapdragon™ X7 HSPA+	10.0.14393.2155
Intel dual band wireless—AC 8265 #3	20.10.1.3
Intel Ethernet connection (4) I219-LM #2	12.15.23.7
Realtek PCIE CardReader	10.0.14393.21292
Dell touch pad	10.2207.101.108
Intel HID event filter	2.2.1.372
HID-compliant consumer control device	10.0.14393.0
HID-compliant vendor defined device	10.0.14393.2312
I2C HID device	10.0.14393.0
Converted portable device	10.0.14393.0
SanDisk X400 M.2 2280 128 GB	10.0.14393.1613
Intel HD Graphics 620	22.20.16.4836
Microsoft Bluetooth enumerator	10.0.14393.1198
Microsoft Bluetooth LE enumerator	10.0.14393.2214
Intel wireless Bluetooth	19.60.0.3
Microphone Array—2 Realtek audio	10.0.14393.0
Speakers/headphones—2 Realtek audio	10.0.14393.0

Driver name	Driver version
Intel dynamic platform and thermal framework generic participant	8.3.10205.4743
Intel dynamic platform and thermal framework manager	8.3.10205.4743
Intel dynamic platform and thermal framework memory participant	8.3.10205.4743
Intel dynamic platform and thermal framework processor participant	8.3.10205.4743

Application, feature, and file details

Table 11. Application, feature, and file details

Applications/features/files	Compatibility and versions
System Center Configuration Manager (SCCM) client	5.00.8412.1307—version that is displayed in Configuration Manager under Control Panel .
Remote Desktop Connection (RDC)	Remote Desktop Protocol version 10.2 is supported. Shell version 10.0.14393. Control version 10.0.14393
Microsoft Management console	Management console 3.0 version 1607—build 14393.2339
Network Access Protection (NAP)	Not Supported.
NetXClean.exe	3.0.0.8
.Net Framework	4.7.1
Master.exe file description—Master_UI	1.0.0.10
Unified Write Filter Manager— uwfmgr.exe file version	10.0.14393.2312
UWFSvc.exe	1.0.4.12
UWFTray.exe —UWF System Tray UI	1.0.4.12
DeleteFreeSpace.exe	1.2.1.0
Disk_Size.exe	3.0.0.5
DWKbFilter.sys	2.3.0.4
DWKbFilterMon.exe	2.2.0.4
DWKbFilterWatchdog.exe	2.2.0.4
RAMDiskSize.exe	1.0.0.2
LanguageConfig.exe	1.0.0.2
BitLocker with TPM	Supported—Latitude 3480/5280 mobile thin client contains TPM 2.0 firmware by default, as a factory configuration.
Windows multi touch	Supported
Background Intelligent Transfer Service (BITS)	Supported
MSXML	Supported

Applications/features/files	Compatibility and versions
XML Paper Specification (XPS)	Supported
Credential roaming	Supported
WPA2	Supported
CredSSP	Supported
Dell Wyse wallpaper on all users	Supported
DirectX 12	Supported
Windows time service	Supported

Installed product details

Table 12. For Latitude 3480 mobile thin client

Product Name	Publisher	Version
MosUnst and Mi	ASIX Electronics Corporation	2.0.4.0
Realtek USB audio	Realtek Semiconductor Corp	6.3.9600.50
Qualcomm Unified Wireless Suite	Qualcomm	11.0.0.10456
Realtek Ethernet Controller All-In-One Windows driver	Realtek Semiconductor Corporation	10.12.1007.2016
Qualcomm Atheros Bluetooth installer—64 bit	Qualcomm Atheros	10.0.0.448
Intel Serial IO driver	Intel Corporation	30.100.1633.3
Intel HID event filter	Intel Corporation	1.1.0.317
Realtek Card Reader	Realtek Semiconductor Corporation	10.0.14393.31228
Intel dynamic platform and thermal framework	Intel Corporation	8.2.11000.2996
Realtek PC camera	Realtek Semiconductor Corporation	10.0.14393.11250
Realtek high definition audio driver	Realtek Semiconductor Corporation	6.0.1.8142
Sierra wireless Dell mobile broadband driver package	Sierra Wireless, Inc.	7.33.4637.0501

Table 13. For Latitude 5280 mobile thin client

Product name	Publisher	Version
Intel PROSet/wireless software	Intel Corporation	20.10.1
Intel wireless Bluetooth	Intel Corporation	19.60.0
Windows driver package - Intel mobile communications (FlashUSB) USB	Intel Mobile Communications	1.0.1.1
Windows driver package—Dell WUDFRd sensor	Dell	1.0.22.4

Product name	Publisher	Version
Intel network connections drivers	Intel Corporation	21.1
Dell ControlVault host components installer —64 bit	Broadcom Limited	4.5.17.305
Dell touch pad	ALPS Electric Corporation Limited	10.2207.101.108
Dell Wireless5814e_Win81_Win10_x64	Dell	6.2.2.2
Realtek Ethernet controller All-In-One Windows driver	Realtek Semiconductor Corporation	10.21.1012.2017
Intel HID event filter	Intel Corporation	2.2.1.372
Realtek Card Reader	Realtek Semiconductor Corporation	10.0.14393.21292
Intel dynamic platform and thermal framework	Intel Corporation	8.3.10205.4743
Realtek PC camera	Realtek Semiconductor Corporation	10.0.15063.20012
Realtek high definition audio driver	Realtek Semiconductor Corporation	6.0.1.8258
Sierra wireless Dell mobile broadband driver package	Sierra Wireless, Inc.	7.30.4595.0507

Quick Fix Engineering—QFE details

Table 14. Quick Fix Engineering

KB number	Description
KB4033393	Update for Microsoft Windows 10 IoT Enterprise
KB4054855	Update for Microsoft Windows 10 IoT Enterprise
KB4091664	Update for Microsoft Windows 10 IoT Enterprise
KB4093137	Update for Microsoft Windows 10 IoT Enterprise
KB4132216	Update for Microsoft Windows 10 IoT Enterprise
KB4284833	Update for Microsoft Windows 10 IoT Enterprise

Used and free space information

Table 15. Used and free space details

Platform	Flash drive size	Used space	Free space
Latitude 3480 mobile thin client	128 GB	14.1 GB	104 GB
Latitude 5280 mobile thin client	128 GB	15.8 GB	102 GB

Important notes

- Wyse Device Agent and Boot Agent must be pushed to the device before imaging from Wyse Management Suite.
- vWorkspace is not supported in this build.
- Adobe flash player is not supported in this build. All components specific to adobe flash player are removed.

